

Blocks fine particulate matter

Dust Block

ダストブロック

Problems with drying laundry outdoors are solved!

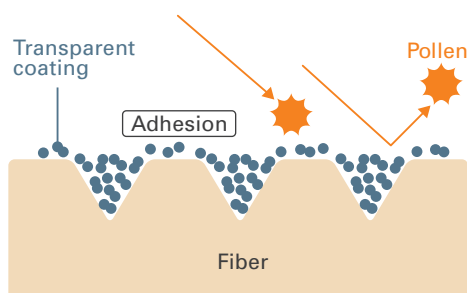
Enables outdoor drying with plenty of exposure to sunlight without having to worry about air pollution.

A special hydrophilic polymer prevents adhesion of pollen, yellow sand, and PM2.5.

It also gives the fabric softness to the touch and high moisture absorbency.

(Moisture absorbency: JIS L 1907, less than 1 second)
Washing resistance: 30 wash cycles

Effect of Dust Block



Interlock (cotton/rayon = 70/30)

	Number of adhered pollen particles	Release rate
Blank	144 particles /mm ²	—
Dust Block before washing	37 particles /mm ²	74.3%
Dust Block after 10 wash cycles	46 particles /mm ²	68.1%

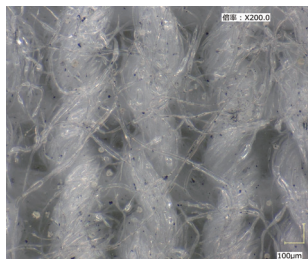
T-cloth (cotton/rayon = 70/30)

	Number of adhered pollen particles	Release rate
Blank	140 particles /mm ²	—
Dust Block before washing	40 particles /mm ²	71.4%
Dust Block after 10 wash cycles	47 particles /mm ²	66.4%

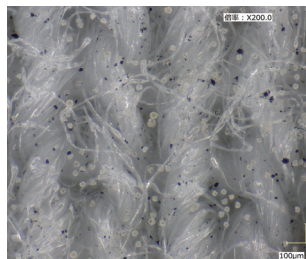
[Test method] Each fabric with/without treatment is placed in a 2.7 L plastic container with 1.5 g of lycopodium spore (pseudo pollen) and shaken 50 times. After being taken out of the container, the fabric is shaken lightly and the pollen release efficiency is evaluated. Washing conforms to JIS L 0217 103 (simple method).



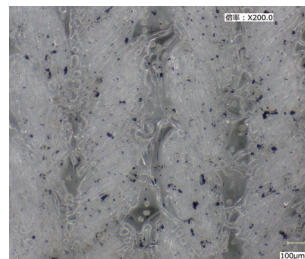
Blank



Dust Block
(before washing)



Dust Block
(after 10 wash cycles)



Dust Block
(after 30 wash cycles)

(Effectiveness may vary depending on conditions such as fabric blend ratios and treatment methods.)

Please confirm numeric values for functionality presented to general consumers for each product.

Also, please consult with our sales department regarding the wording of sales promotional materials for general consumers.)

Omikenshi Co., Ltd.

<http://www.omikenshi.co.jp/>

